



Wish List:



NEWS

As the WATCH Activities Center nears completion, we hope that you will consider donating some of the following items: Ball gloves, basketballs, shuffleboard supplies, Wii games, volleyballs, ping pong table, pool table, pool cues, jump ropes and any other recreational supplies. We will also need assistance with stocking our new kitchen with supplies such as pots & pans, serving bowls, cooking utensils, silverware, serving utensils and paper products. All donations are tax deductible, and greatly appreciated by everyone at WATCH. Contact us at 702 Main Street, Murray, KY or email us at watch@murray-ky.net



Executive Director, Peggy Williams (standing) with Board members Marvin Harris, Jason Pittman, Ava Watkins, Betty Brockway and Judy Hafner, celebrating Peggy's 40th Anniversary of employment.

Peggy Williams, Executive Director

Office Hours: Monday, Tuesday & Thursday 7:30-3:30

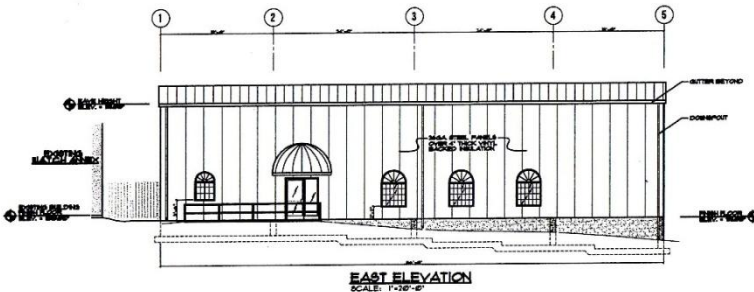
Phone: 759-1965 Ext. 100

Mission Statement: WATCH, Inc. is a private, non-profit organization that assists people with disabilities in becoming fully integrated into their community.

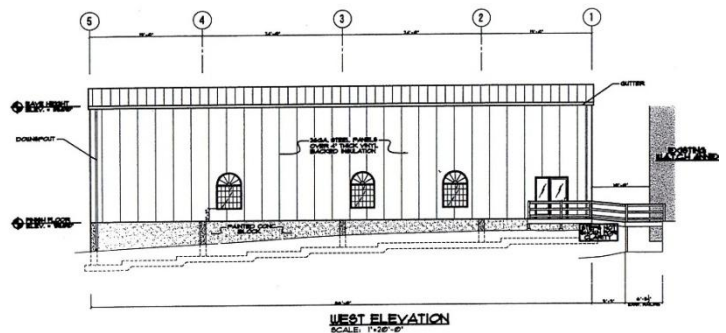
2011 has been a year of construction, program expansion and progress.

Since 1982, with your help, WATCH has moved from serving 6 individuals in an old house to operating out of almost 13,000 square feet and serving 52 developmentally disabled adults today.

On August 3, 2011, site preparation began for the construction of a 7,783 square foot gymnasium & activity center located at 107 N. 7th Street. Our individuals and staff discovered several years ago that physical fitness and team competition between area agencies was an experience that everyone enjoyed. However, it became increasingly difficult to find a gym or playing area that could open its doors to us on a regular basis. In addition, other activities such as our Community Appreciation Thanksgiving Luncheon had outgrown our existing facility accommodations. The new building will have a full size middle school gym, a recreation room, kitchen, restrooms and storage area. We are planning our first party in the gym on Valentine's Day 2012. Donations are being accepted to assist with construction costs and are tax deductible.



Main entrance facing North 7th Street



Back entrance facing WATCH parking lot

You can view our progress online by checking the WATCH Facebook page. Just go to Facebook, type in "WATCH Inc." at the top of the page under "search" (omit the comma). Don't forget to click on "like" on the left side of the page to become our friend and receive updates in your news feed.

Agency Updates



An office enclosure was constructed in the annex work area to provide better protection of confidential information during phone conversations and meetings.



The remaining 22 year old railroad tie retaining wall in front of the workshop and loading dock area was replaced with terrace rock through a grant from the Kentucky Colonels.



We depend on the Woodmen of the World for donating a new American flag when we need ours replaced and disposing of the old flag in a respectful manner.

We celebrated the 25th anniversary of employment for 2 staff members, Patrice Klobe and Gina Slaughter. Patrice serves WATCH as the Administrative Assistant and Bookkeeper. Gina is the WATCH Medicaid Services Supervisor. A party was held in their honor.

The 40th anniversary of employment was celebrated for Peggy Williams with 30 of those years serving as the WATCH, Inc. Executive Director. A gold rose for each decade of service was presented by the board of directors and staff.

Randy Taylor was appointed by Murray Mayor, Bill Wells, to be the liaison for WATCH and the Murray City Council.

The Knights of Columbus conducted their annual Tootsie Roll Drive in October with over \$2,000 donated to WATCH each year.

The windows were replaced in the workshop that was constructed in 1989.

WATCH was certified as an Acquired Brain Injury provider to Kentucky Medicaid in 2011. We continue to provide services for the Supports for Community Living and Michelle P. Waivers, Supported Employment and Community Living Supports. In addition, a Hart-Supported Living Grant has been received each year since 1991 to assist an individual to live in his/her own home.



Outstanding donations for our gym construction include \$32,000 from Mr. Kenneth Owen and \$10,000 grant from Pella Corporation. The Lowe's Heroes will provide materials and labor to construct a walkway between the activity center and existing deck that connects the office building and Annex.



Gary and Becca Howorka provided \$1,500 for our Thanksgiving, Christmas and Valentine's Day meals, parties and new WATCH t-shirts for everyone. Terry Humphrey (pictured with Jimmy) entertained the crowd at Christmas with David Daniel providing the music on February 14th.



We welcomed Joey McCall in May as a new staff member.

WATCH employs 16 full time and 2 part time staff.

Individual Updates



The Mayfield J.U. Kevil Center and WATCH teams got together for a kickball competition in June. Paducah Easter Seals and WATCH competed in several softball games and picnics throughout the summer and fall.



Our good friends, Rick and Robin Arnold visited with us. Rick gave another outstanding performance and rocked the center again this year!



Aluminum can recycling continues at WATCH and your contributions of aluminum are desperately needed. Each time our cotton wagon is filled up, WATCH receives approximately \$700. The wagon is located in our parking lot at 702 Main Street. Cans may be dropped off any time 24/7!



In Loving Memory

We lost too many of our friends this year. Our sympathy goes out to all the families of: Cathy Crutcher, Paul Stewart, Brondy Stokes, Linda Humphrey, Madeline Virts, Nancy Fox, Mike Morris and Louise Donelson.



Louise Donelson



Madeline Virts



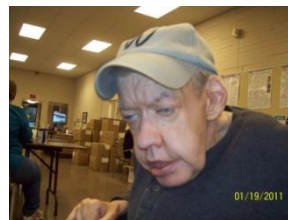
Nancy Fox



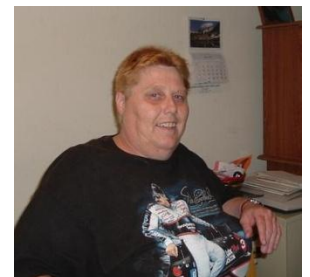
Mike Morris



Paul Stewart



Brondy Stokes



Cathy Crutcher

WATCH was happy to assist Murray Main Street in April, filling over 2,000 Easter eggs. Crystal was excited to have the opportunity to portray a very special character at the Easter Egg Hunt on the Court Square.

Anne Wilson visits the center twice a week and works with individuals on new and creative arts and crafts ideas.

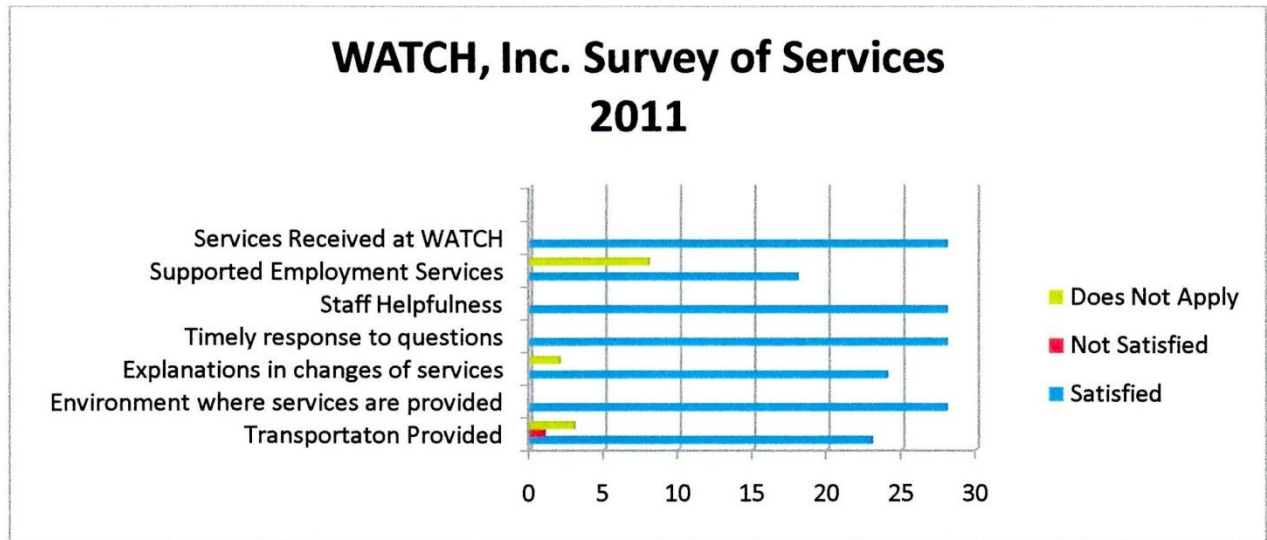
TB skin tests and flu vaccinations were provided to individuals and staff by the Calloway County Health Department.

WATCH individuals performed in a video for the Pepsi Refresh Grant application. The video is posted on Youtube.com (search for Pepsi video_002). Although we were not successful in being drawn for the grant we thought our video was the best!

Individuals who attend the center look forward to work each day whether in the community supervised by a WATCH job coach, or assembling over 75,000 small parts for Briggs & Stratton and the Pella Corporation at WATCH. Paychecks may be as much as \$950 each month.

Congratulations to staff member Connie Dillon, who welcomed her first grandchild, Halyn Faith Jackson on 08.26.11; and to staff member Debbie York who welcomed her 3rd grandchild, Leeland Krew Henson on 08.09.11.

Our annual Survey of Services was returned to WATCH by individuals, families, guardians, and other service consumers. We are proud to report the results as shown below.



Comments:

- Please keep K. busy working, playing Wii, training, cooking chores, anything so she does not get bored. Keep her busy and her mind busy so she does so much better during the day! She loves getting her own check every month!
- I have several individuals that have been served for a long time. I believe the staff at WATCH does an outstanding job regarding the individuals there and also in their relations with me and my agency.
- Softball. Loves playing all summer!
- The most helpful staff. They care about the children. They are so loving toward the children.
- WATCH staff always go above and beyond.
- The WATCH staff has always been there for S. Don't know what we would have done without you all.
- Staff is helpful to me
- Great services, great staff, great program. Always looking to grow and improve services needed for clients. I recommend WATCH to others all the time. It is a great program. I think it is the best program I work with.
- God bless you all!
- This is an excellent program; we are all fortunate to have WATCH for caregivers and clients.
- Having lived in several states this place (WATCH) is one of the better ones for our son. Well satisfied.
- The staff have always been just wonderful to us. They are a blessing to us.
- WATCH has been/continues to be a life-line for our adult disabled community. I wish more funding was available so they could expand their services even more. Wonderful program....wonderful and caring staff! I can't imagine not having WATCH!
- All staff is nice and helpful and friendly and good to me.
- WATCH and all the people involved are a blessing to our family. D. gets to go to "work" just like Mom and Dad. She is proud of her pay checks even if they are quite small. We appreciate all everyone does for her! I don't know what we would do without WATCH.
- I like to work at WATCH because the work is fun to do and the money is great. Great staff are cool people and good to us. TV is fun to watch and games are cool. Many friends are here to hang out with. WATCH is great. I tell all my friends and they are pleased to hear that. Peggy is a good person.

WATCH ACTIVITIES



Ann Ingle, R.N., C.D.E. has provided medication training for WATCH employees for many years.



Amber looks forward to Pet Therapy each month at WATCH.



Everyone looks forward to seeing Anne Wilson each week on art day.



Toyota of Murray / Dwain Taylor Chevrolet donated \$1 for every new fan they got on Facebook for 1 week. A check was presented in the amount of \$122.00.



Everyone enjoyed a ballgame and picnic with Easter Seals at the Murray-Calloway County Park.



It has been a dream for many years at WATCH to build an activity center which includes a gym, kitchen and recreation room. Excitement is in the air as we watch the progress made each day.



Everyone at WATCH would like to thank each of you for your continued support of our program for disabled adults. You, our community, have made a difference in so many lives that might not have had the opportunity or choice to be productive and happy. We wish you a happy holiday season and the best that life has to give in 2012!

(Above picture is a scene from our Pepsi Refresh Video. Don't forget to check it out on YouTube, and LIKE us on Facebook!)

WATCH, Inc.
702 Main Street
Murray, KY 42071

REMINDER:
Your donation
is tax
deductible